

Physiology Unit 3 Review

OLD Stuff: (Review old Quiz and Review materials)

Drugs:

- What hormone is affected in most of these cases?
- What is meant by a serotonin re-uptake inhibitor?

Reflexes

- Reflex Arc: (Draw and Label)

Nerve Distance

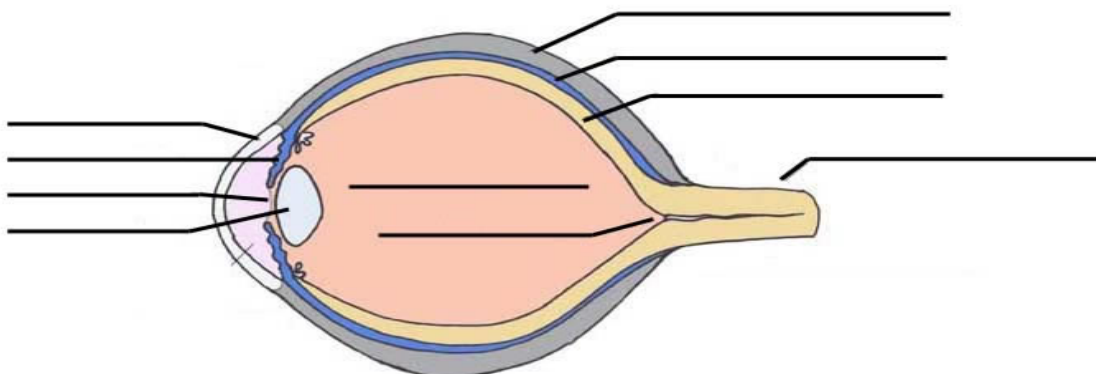
- Why cant you perceive 2 separate points of contact on the inside of your 4arm?

NEW Stuff:

EYE

- Label this Eye:

Name the Structures of the Eye



©Sheri Amsel

- Know the main function of each part of the eye:

- What are rods and cones, how are they different?
- How can lenses correct astigmatism?

Taste/Smell:

- What part of your brain perceives this info?
- Why are smell and taste so linked together?

ENDOCRINE NOTES:

- Main Goal: UNDERSTAND WHAT CAUSES THE VARIOUS DISEASES AND WHICH HORMONES AND GLANDS THEY STEM FROM
 - Go over scenarios from TOC17
 - Go over practice Diabetes Quiz
 - Label

