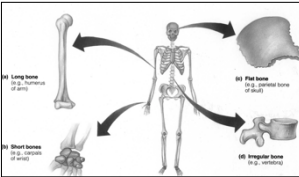


- ### I. Bone Functions
- A. **Support**
 - B. **Protection**-skull, vertebral column and ribs serve to protect
 - C. **Movement**-bones attach to muscles by tendons
 - D. **Mineral storage**- store many types of minerals, most important are calcium and phosphate.
 - E. **Blood cell formation**-called hematopoiesis and occurs inside marrow cavities.

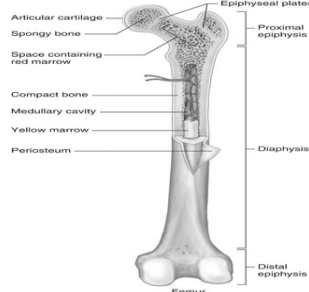
- ### II. Classification of Bones
- A. **Long bones**-all limb bones but patella, wrist and ankle. Mostly compact bone.
 - B. **Short bones**-wrist and ankle bones, square shape.
 - C. **Flat bones**-sternum, skull, rib bones
 - D. **Irregular bones**-vertebrae, hips, mostly spongy bone.
- 

III. Anatomy of Bones

A. Long bones-

A. Consist of:

- A. Epiphysis - *End*
- B. Diaphysis - *Shaft*
- C. Membranes such as:
 - A. Periosteum - *Covering of bone*
 - B. Osteoblasts - *Cell*
 - C. Osteoclasts - *Cell*
- D. Spongy bone and compact bone.

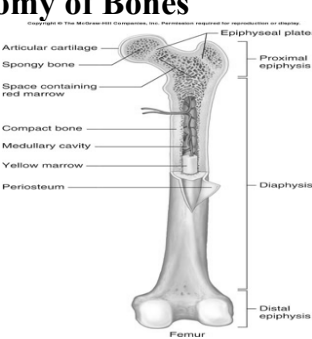
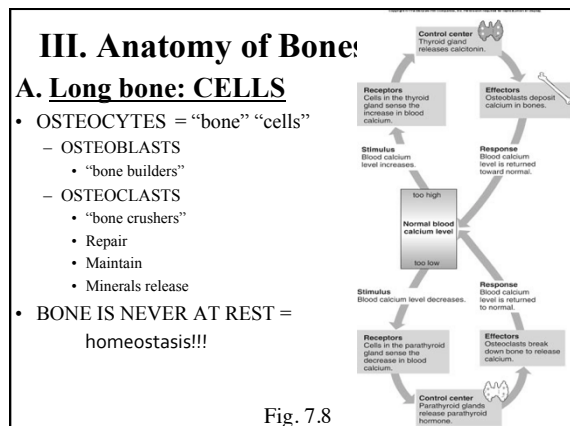


III. Anatomy of Bones

A. Long bones-

A. Periosteum -

- Anchors tendons and ligaments to bone
- Allows passage of blood vessels, lymphatics and nerves into and out of the bone.
- Participates in growth

III. Anatomy of Bones

Copyright © The McGraw-Hill Companies, Inc. Permission required for reproduction or display.

B. All other bones-

1. Not cylindrical
2. Contain:
 1. Periosteum
 2. Compact Bone
 3. Spongy Bone.

III. Anatomy of Bones

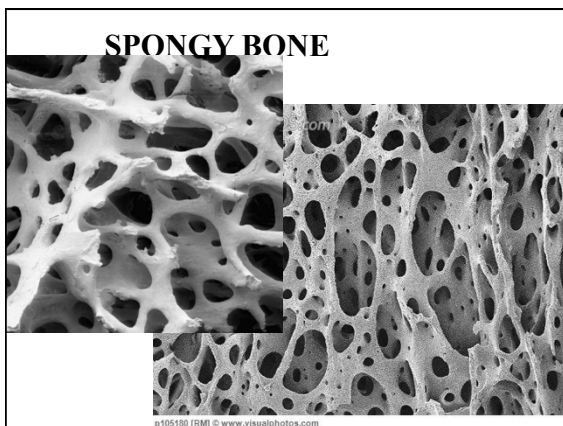
C. Compact Bone-

1. Unit is called Haversian system.
2. Blood vessels and nerves run through here.

III. Anatomy of Bones

D. Spongy bone

1. Contain structures called trabeculae



Epiphyseal plate -cartilage band indicates ossification is occurring and spongy bone is being deposited.