

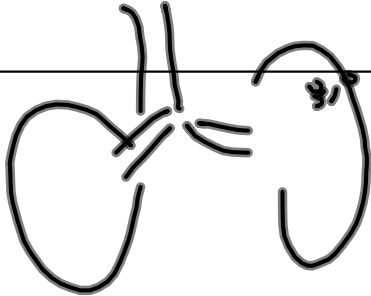

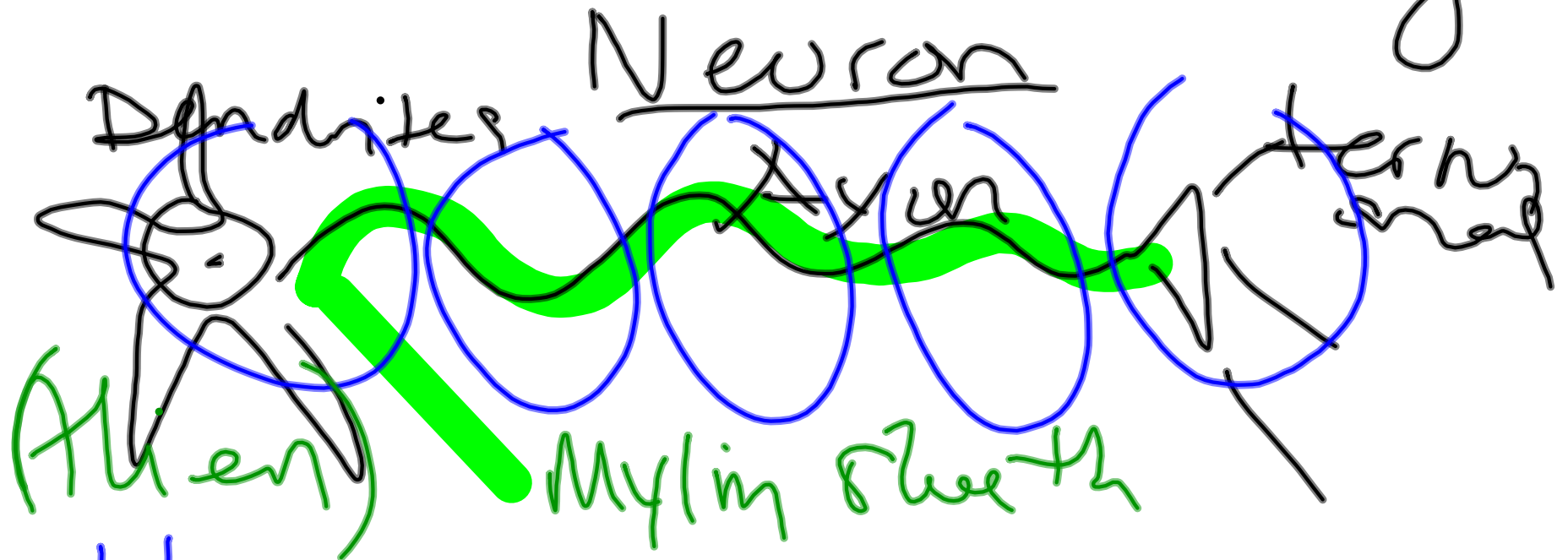
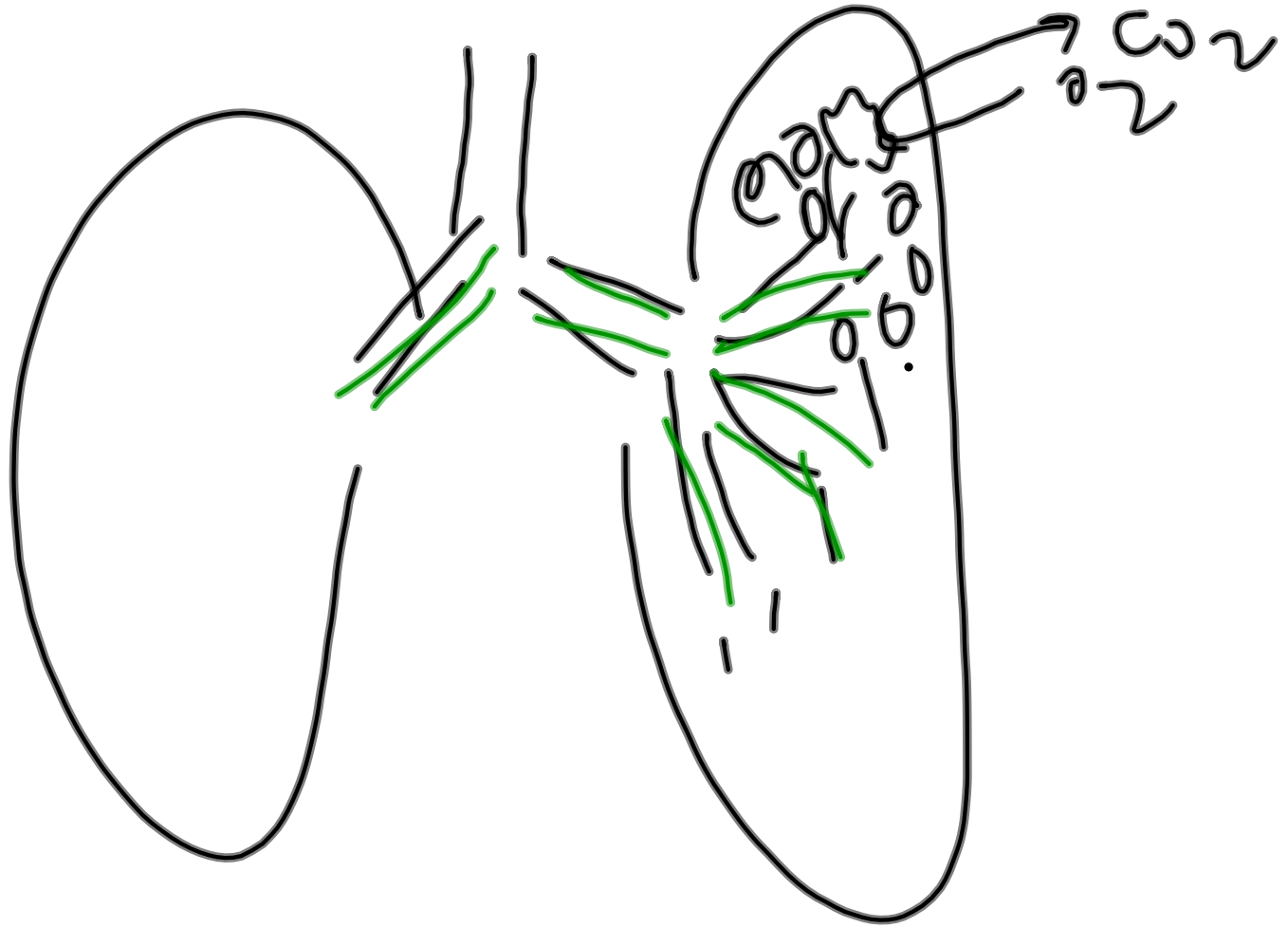


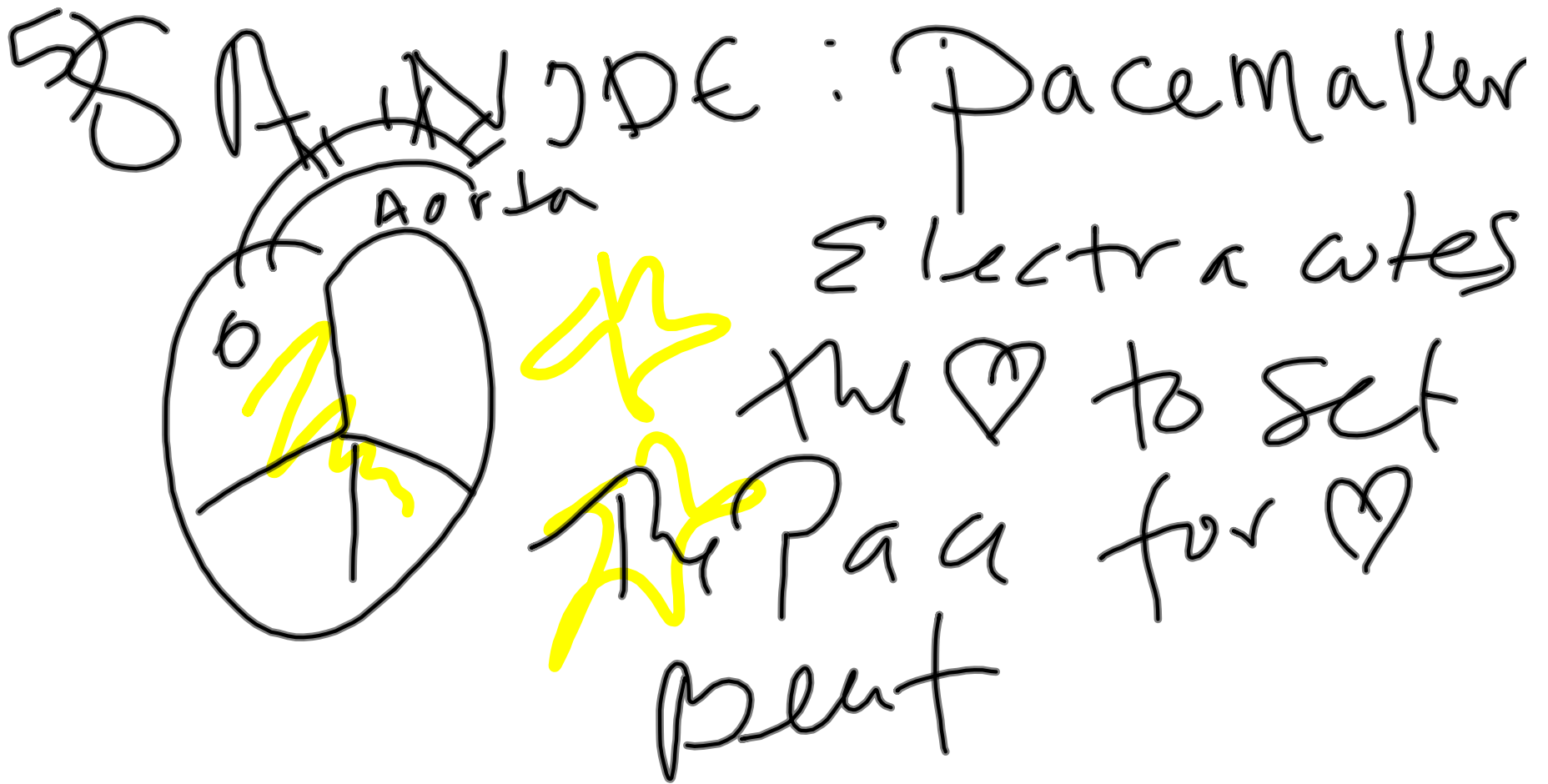
System	Circulatory	Respiratory	Digestive
<p>SA found here</p> 	 <p>IN RBC OUT NO. VUL</p>	 <p><u>Alveoli</u> lots of SA</p>	<p>Intestine have villi</p> 
<p>Function of SA</p>	<p>↑ Room 4 SA.</p>	<p>↑ Room for O₂ in / CO₂ out</p>	<p>↑ Room to grab + absorb nutrients</p>

↑ SIF = Nervous Sys



Helps them pass the signal
further w/in 1 cell





Pacemaker

Electrodes

The heart to set

The Paca for heart

Pent

1) Pulmonary



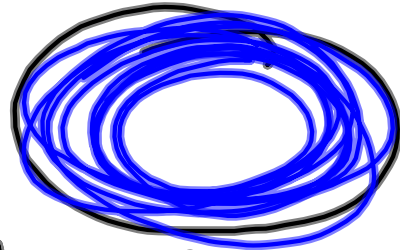
Circulation of Blood

Systemic



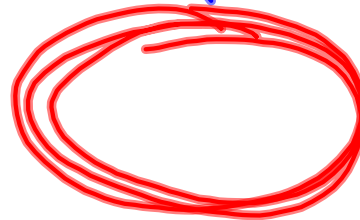
Artery Vs Vein

Away
from 

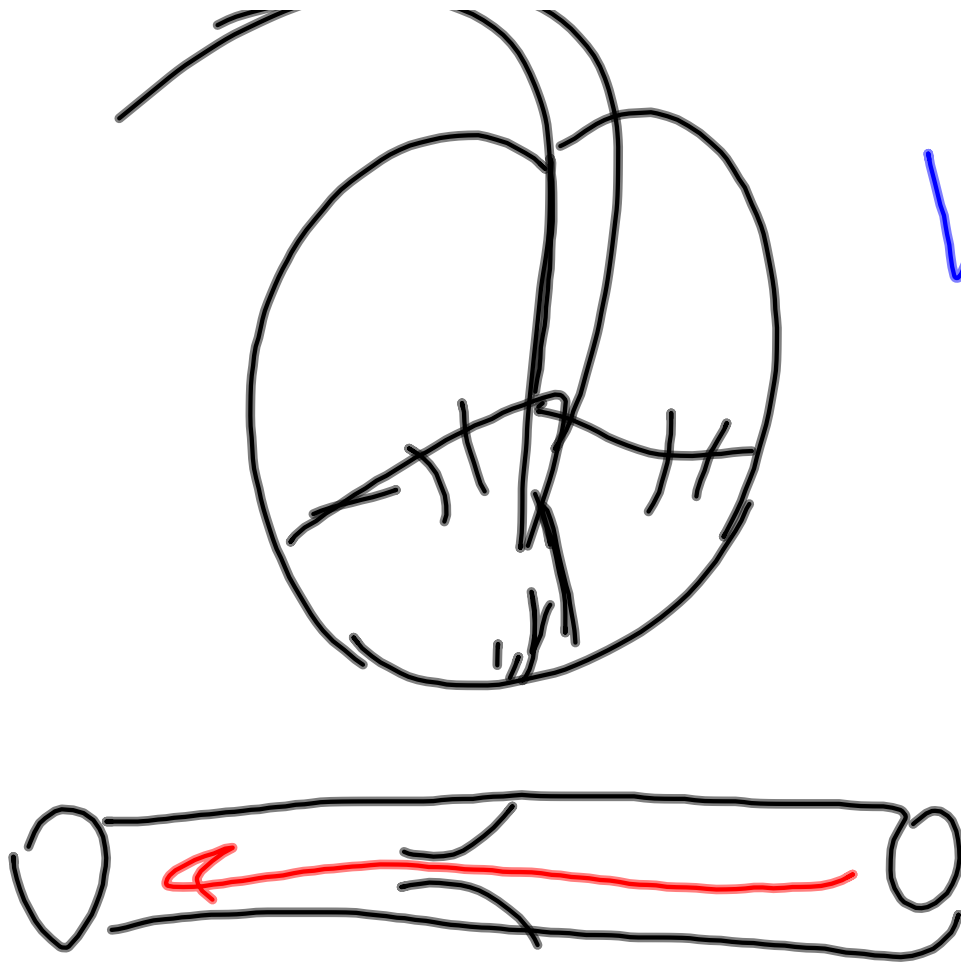


to handle pressure
expand

Return
to 

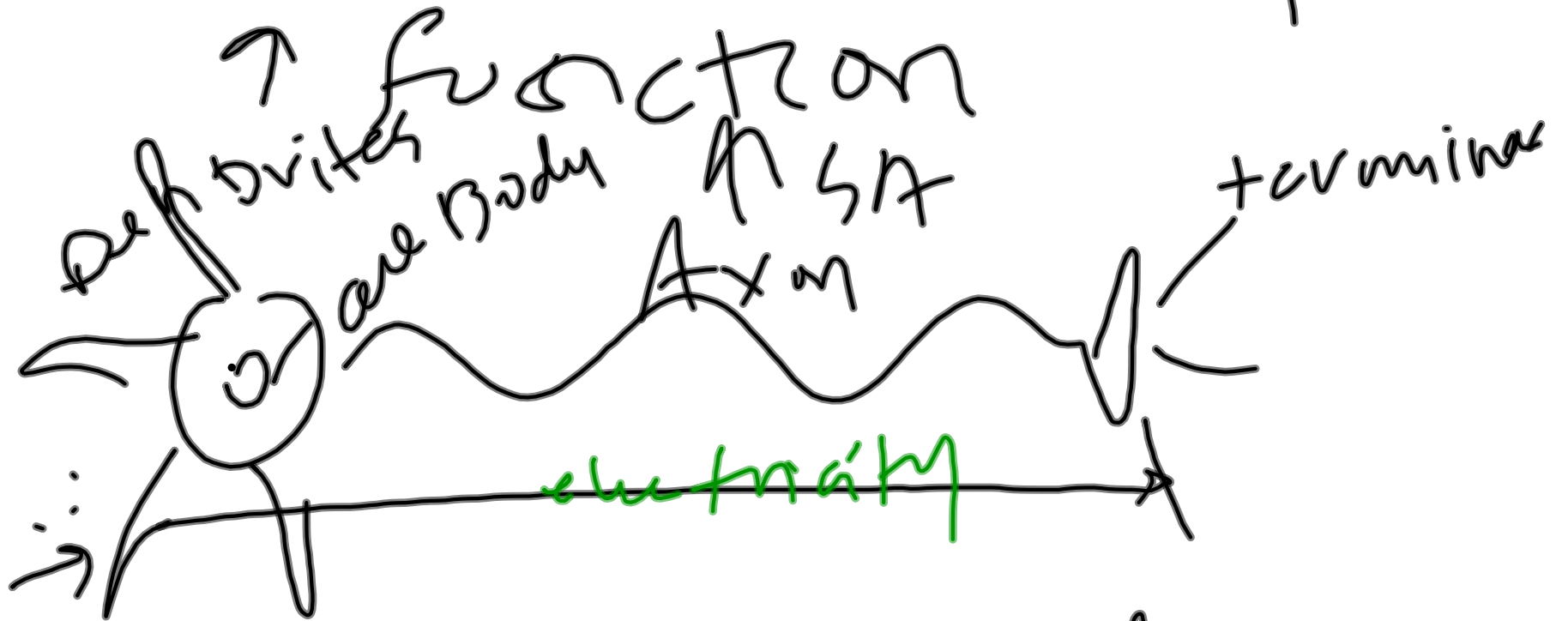






Valves:
Stop Blood
from moving
Backwards.

S A Nervous Sys



Transfer a signal further