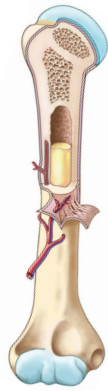


Unit2: Skeletal System Practice Quiz:

Bone Functions (5)	
Function	How does form Support Function
1)	
2)	
3)	
4)	
5)	

II. Classification of Bones (5)	
Classification	General Location
1)	
2)	
3)	
4)	
5)	

Anatomy of a Long Bone 	<u>Connect to Diagram</u>	<u>Brief Function of Each</u>	
		Osteoclasts:	
		Osteoblasts:	
		Epiphysis:	
		Diaphysis:	
		Periosteum:	
		Spongy bone:	
		Compact bone:	

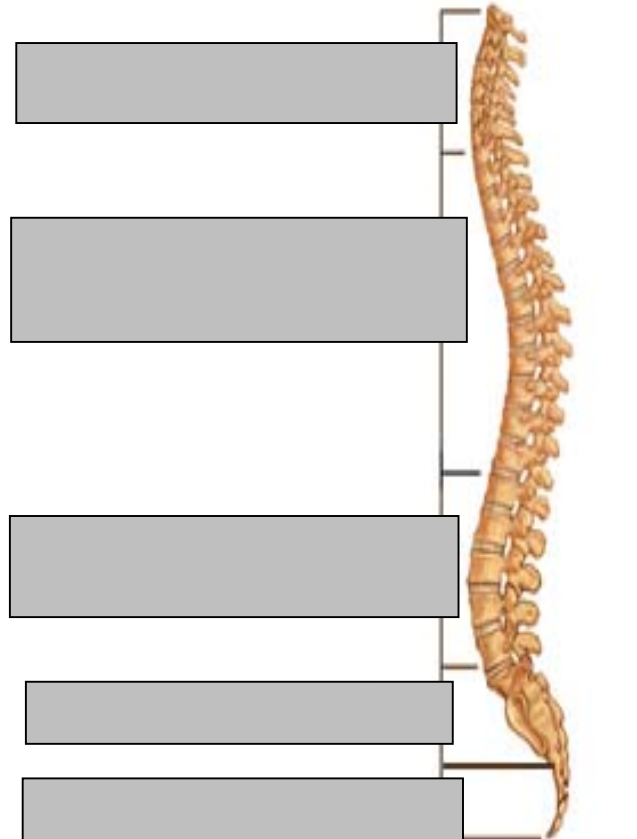
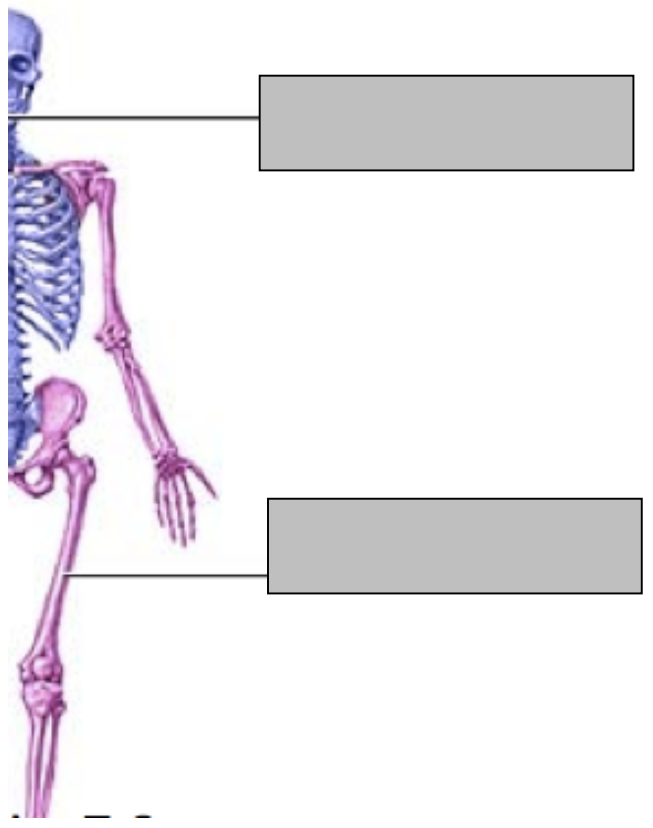
LAB: Skull Structure

Label 5 bones in the skull



Axial Appendicular Skeletal Anatomy

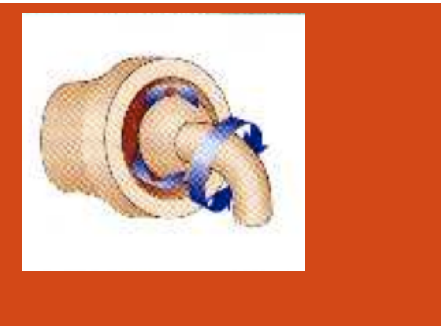
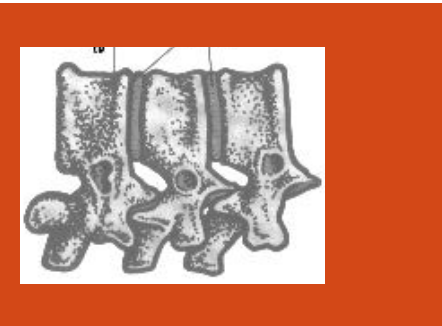
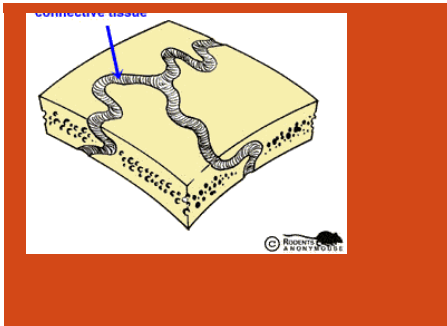
Label:



Name	Form	Function	How Form Fits Function
(just the 2 shown)			
		Support the weight of the upper body	
			Fused bones to take more stress

Joints Notes

Q: Why can knees not twist?



Joint Type:

Where do you find this joint:

How form Fits Function:

Joint Type:

Where do you find this joint:

How form Fits Function:

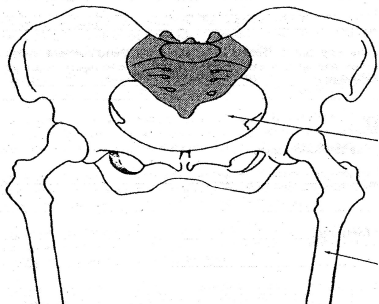
Joint Type:

Where do you find this joint:

How form Fits Function:

TOC#8 - Male Vs Female Skeletal Anatomy Lab



Provide 3 pieces of evidence that this is a female pelvis – connect form to function



Evidence	How form Fits Function
1)	

Evidence	How form Fits Function
2)	
3)	

Movement Notes

<u>Adduction</u>	<u>Abduction</u>
Describe Movement: Ex of joint that produces this movement: _____	Describe Movement: Ex of joint that produces this movement: _____
	
Movement Type: _____ Ex of joint that produces this movement: _____	Movement Type: _____ Ex of joint that produces this movement: _____