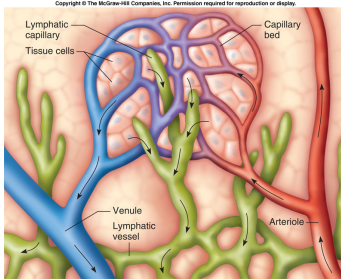
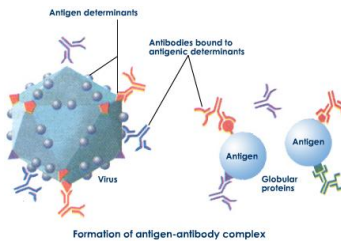
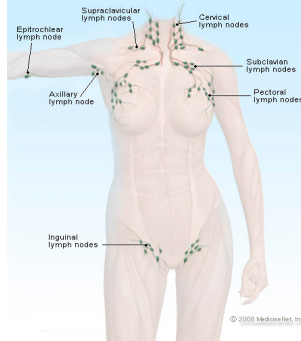


Lymph and Immune Notes

Questions/Pictures/ Key Words



Superficial (Surface) Lymphatics



Lymphatic System

- Lymph vessels
 - Main Job:

- Why don't the RBC's leave the capillaries?

- Lymph nodes
 - Main Jobs:

- 1.
- 2.

-What does it mean to be regional indicators of health?

Body Defenses Against Infection

- Three step mechanism:
Recognize → Respond → Remember!

Recognize

- You find Antibodies on _____
- You find _____ on pathogens (or non-self tissue)

**Questions/Pictures/
Key Words**

Respond

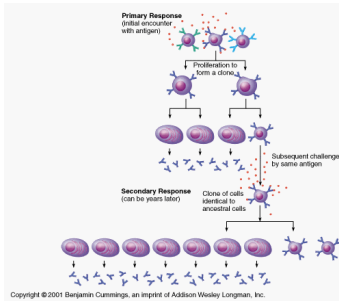
1) Non-Specific Defense

1st Line:

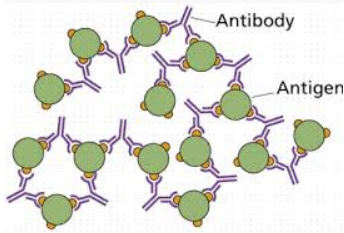
2nd Line:

2) Cellular Immune Response

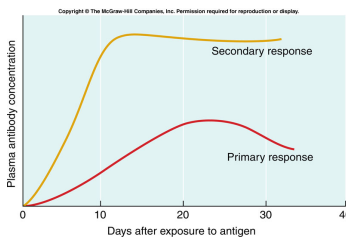
Draw how Helper T Cells call Killer T Cells



2) Humoral Immune Response



Remember



Summary: