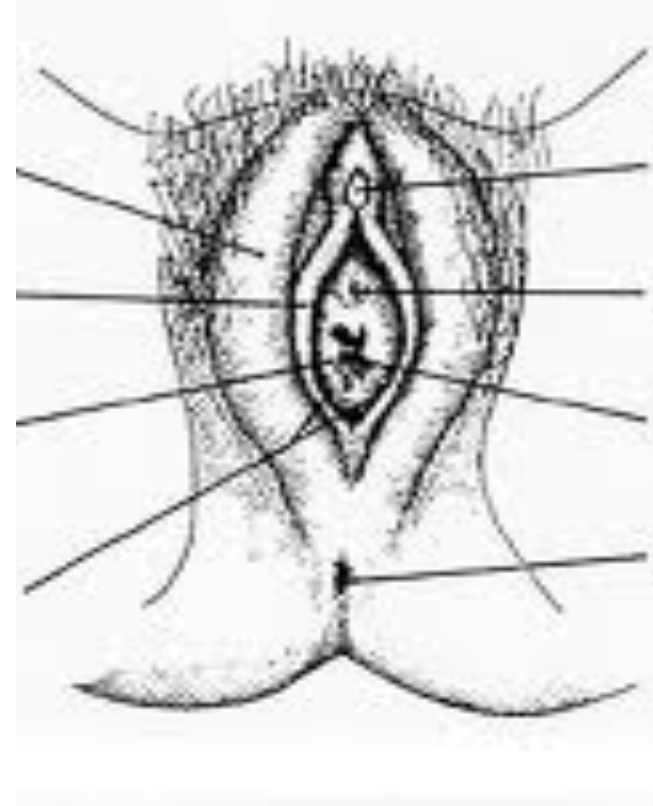
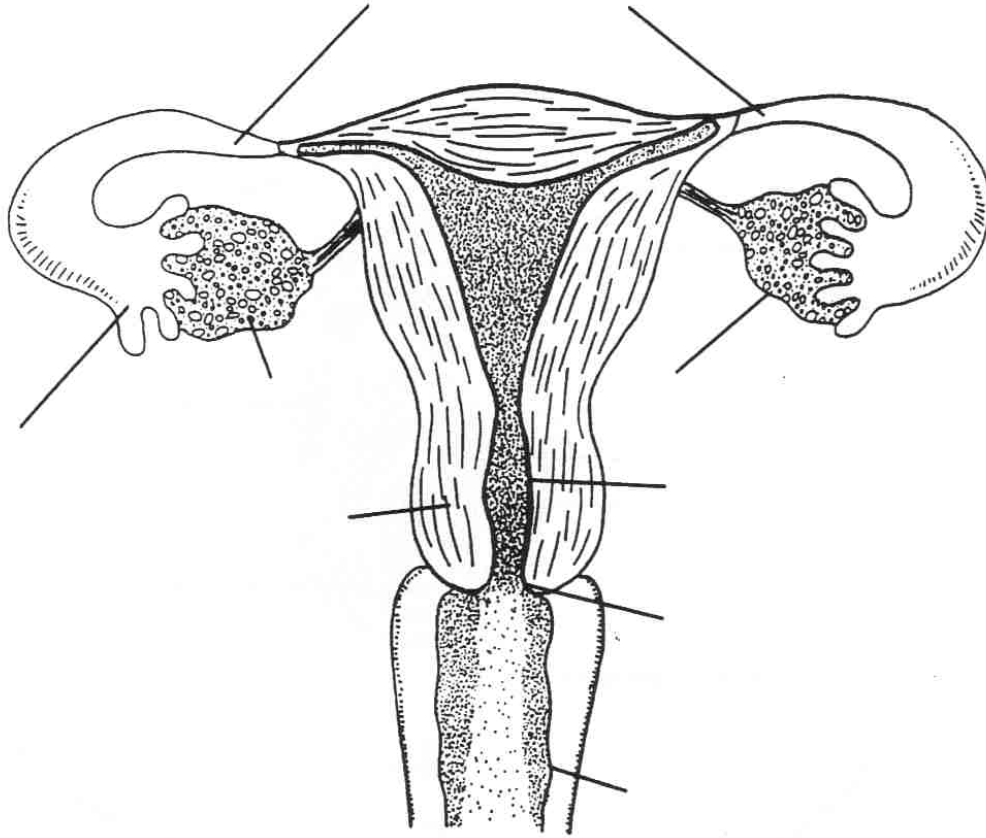


Practice



DIRECTIONS: Using the words below, label the parts of the female reproductive system:

CERVIX
FIMBRIA

UTERUS
OVARY

OVUM
VAGINA

FALLOPIAN TUBE
UTERINE LINING

(try not to use, you wont get one on the test)
Labia Minora, Vagina, Anus, Hymen, Urethra, Labia
Majora, Clitoris

Word Bank: