

Enrichment

# Behavior in Captive Vs Wild Animals

- Wild: (in their natural habitat)
  - Natural
- Captive (in a zoo, lab, farm, home)
  - Artificial



# Enrichment

- For captive Animals:
- For improving animal welfare in any species
- Avoid “stereotypical behavior”: reparative abnormal behavior

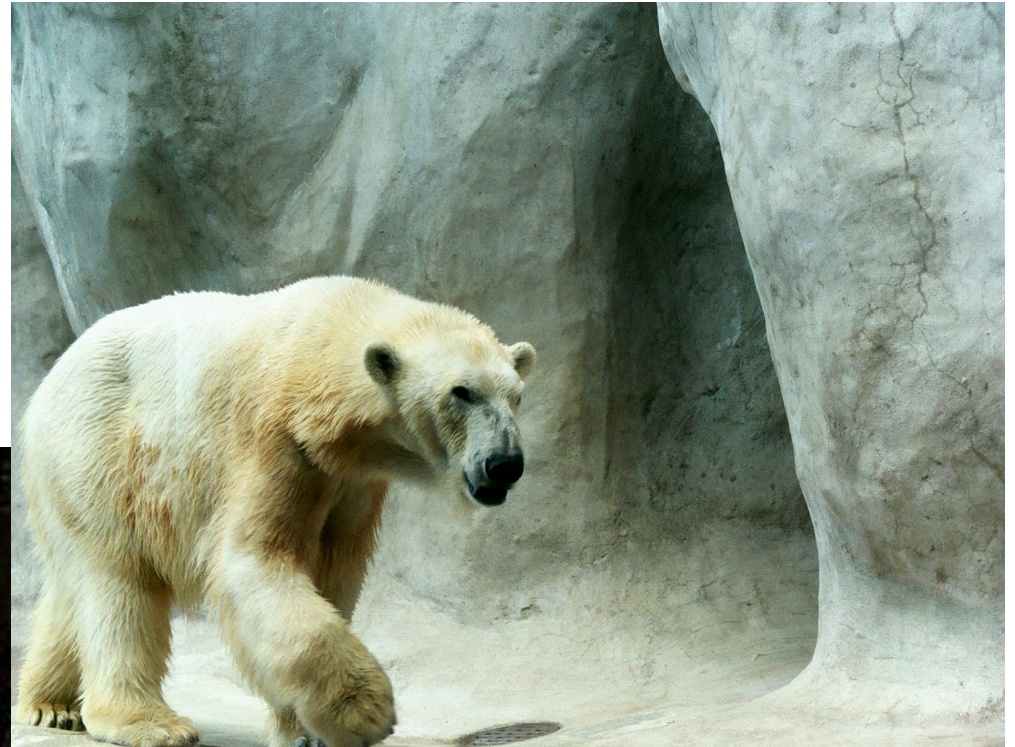
# Stereotypical Behavior in Herbivores



# Stereotypical Behavior in Herbivores



# Stereotypical Behavior in Carnivores



# Stereotypical Behavior in Carnivores



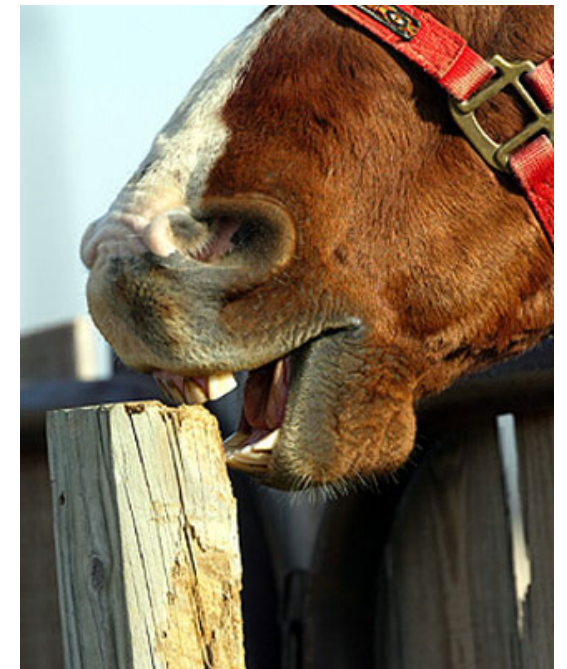
# What do the herbivores have in common?



- Mouth



- What do they naturally spend their day doing?





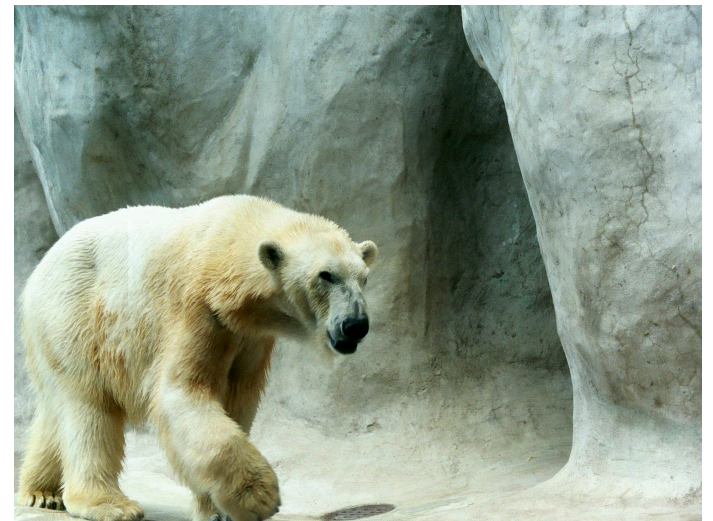
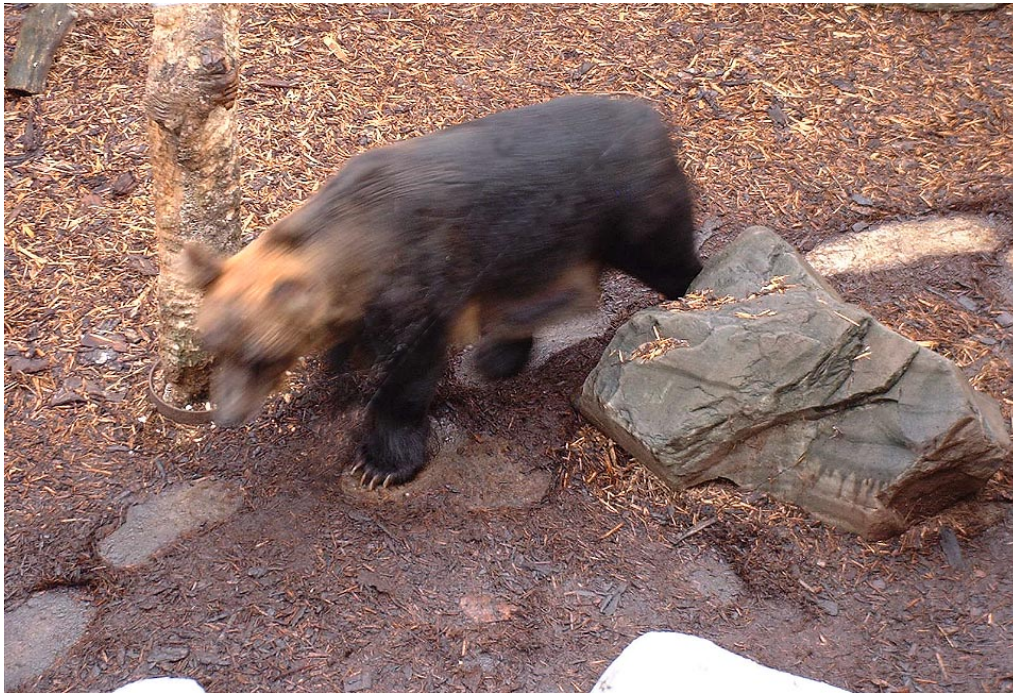


# What do the carnivores have in common?



- Pacing

- What do they naturally spend their day doing?





How do you stop it?  
Distraction – Give them something to do!



MyConfinedSpace.com