

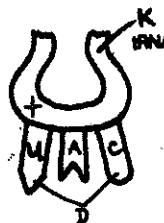
**Application - Translation Diagram Coloring**

Color the diagram below. Color each structure the same color and make sure all labels are clear. Do not color titles with stars or dots.

**PROTEIN SYNTHESIS:  
TRANSLATION**

**PROTEIN SYNTHESIS:  
TRANSLATION.**

**CODON.**  
**ANTICODON.**  
**RIBOSOME.**  
**SMALL SUBUNIT.**  
**LARGE SUBUNIT.**  
**P SITE.**  
**A SITE.**

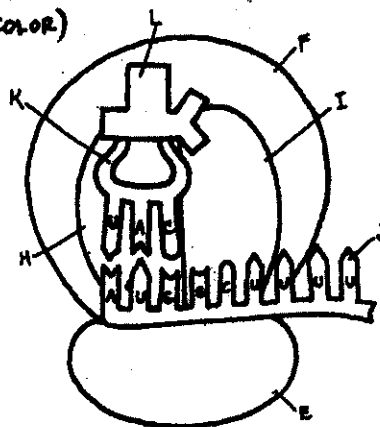
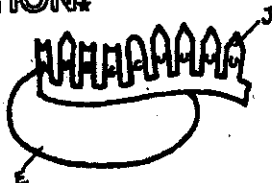


**RIBOSOME (color EFHI same color.)**

**PHASES OF TRANSLATION.**

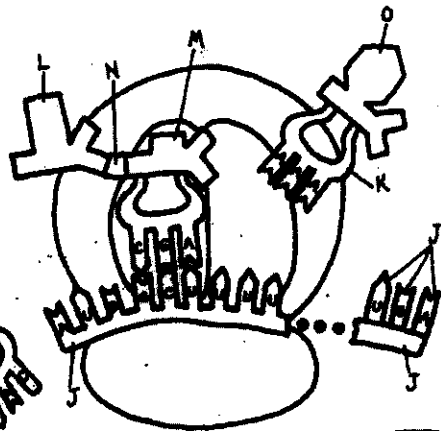
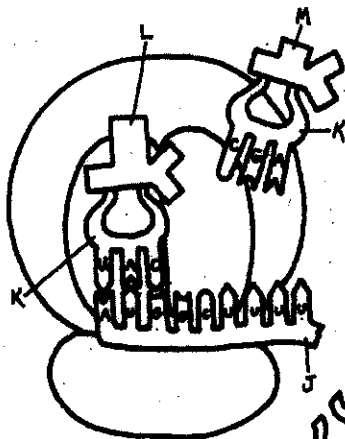
**INITIATION.**

**mRNA.**  
**tRNA.**  
**METHIONINE.** (initiation amino acid)

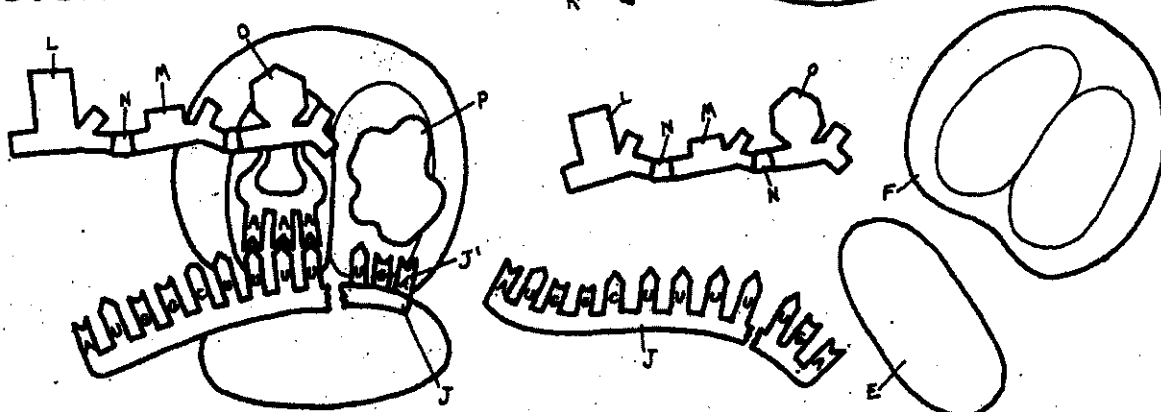


**ELONGATION.**

**ALANINE.**  
**PEPTIDE BOND.**  
**PHENYLALANINE.**  
**STOP CODON.**



**TERMINATION.**  
**RELEASE FACTOR.**



(NOTE: Complete amino acid (letters L, M, P, A, E, N above) and codon chart found on p. 149 of Biology text. (Midor/Levitz, 2000))