

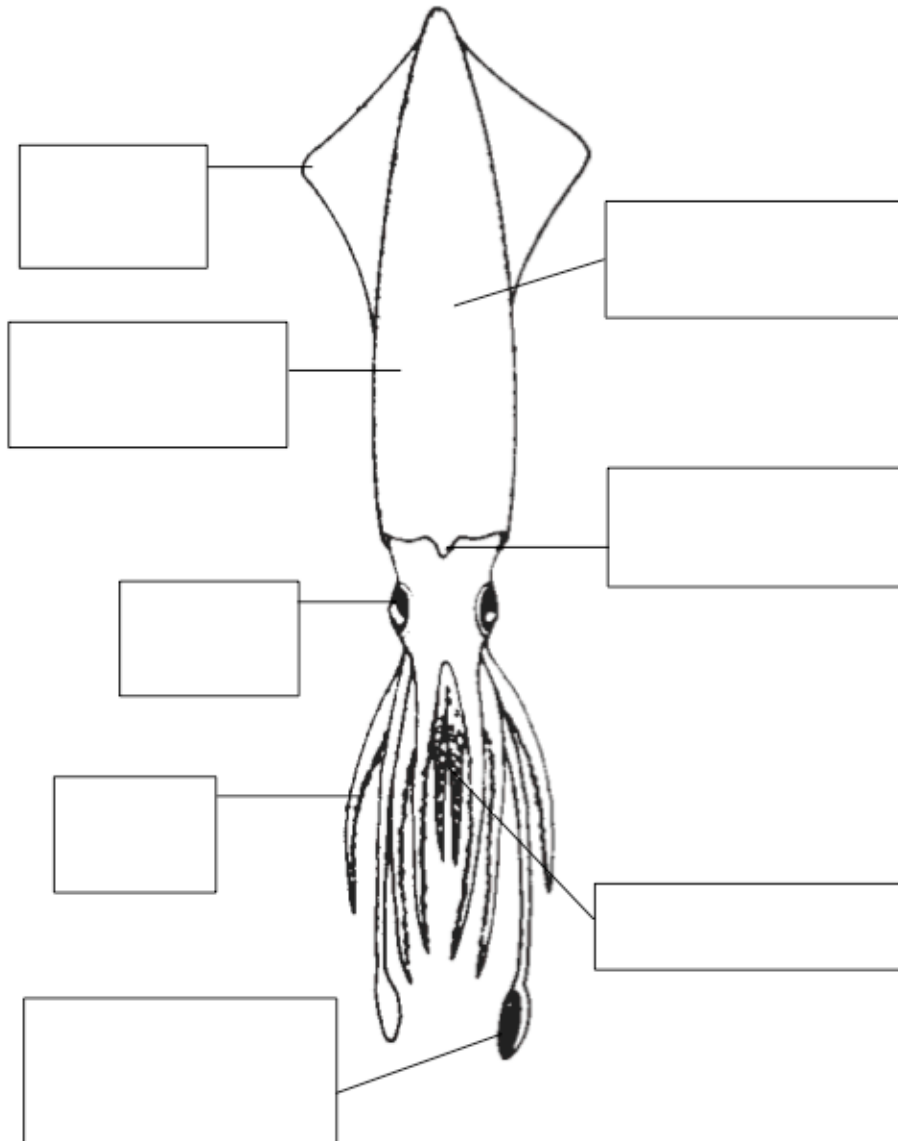


A) EXTERNAL ANATOMY:

1. What are the tentacles derived from? (*i.e.* where do the tentacles come from – think of HAM)

2. Find the siphon and draw it below. What is the function of the siphon?

From Pen to Ink
Squid: External Anatomy (student worksheet)

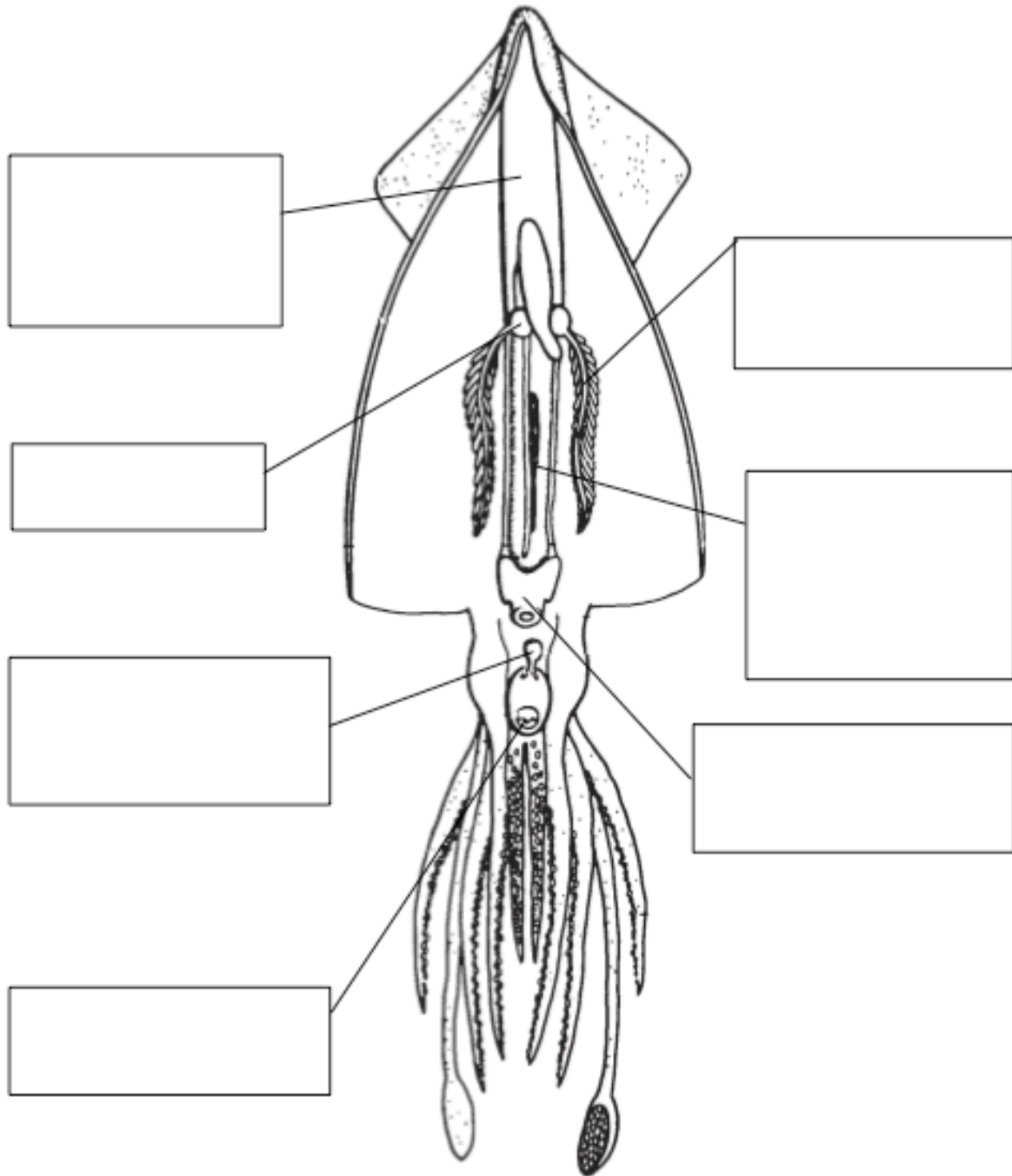


B) Internal Anatomy:

3. Place your squid on the dissecting pan with the siphon up.
4. Carefully cut the mantle up the back side from the siphon to the top. Be careful not to cut the organs on the inside of the squid.

From Pen to Ink

Squid: Internal Anatomy (student worksheet)



5. Remove the lens from the eye. Draw it below.

Extra Credit: Write your initials using the pen and ink from the squid on the front of this lab

6. Find and remove the ink sack. CAREFULLY set aside.

7. Locate the pen. Remove and set it aside. Draw the pen below.

8. What is the function of the pen?

9. What is the function of the ink sac?

10. CLEAN UP!!

- a. Enclose everything in the paper plate.
- b. Throw the paper plate and all squid parts in the garbage can at the front of the room.
- c. Rinse scissors, rulers, and blue pans. Dry them with paper towel.
- d. Wipe your table top area with a wet sponge and cleaner.
- e. Thoroughly wash your hands with soap and lots of water. Dry them.