

# Annelida (Segmented Worm) Lab

## A) How Do Earthworms Move?

Procedure:

1. Carefully observe your group's earthworm as it moves across the wet paper.
2. Discuss the movement of the earthworm with your group.
3. Write a preliminary explanation for how you think the worm moves from one place to another: \_\_\_\_\_

---



---



---



---

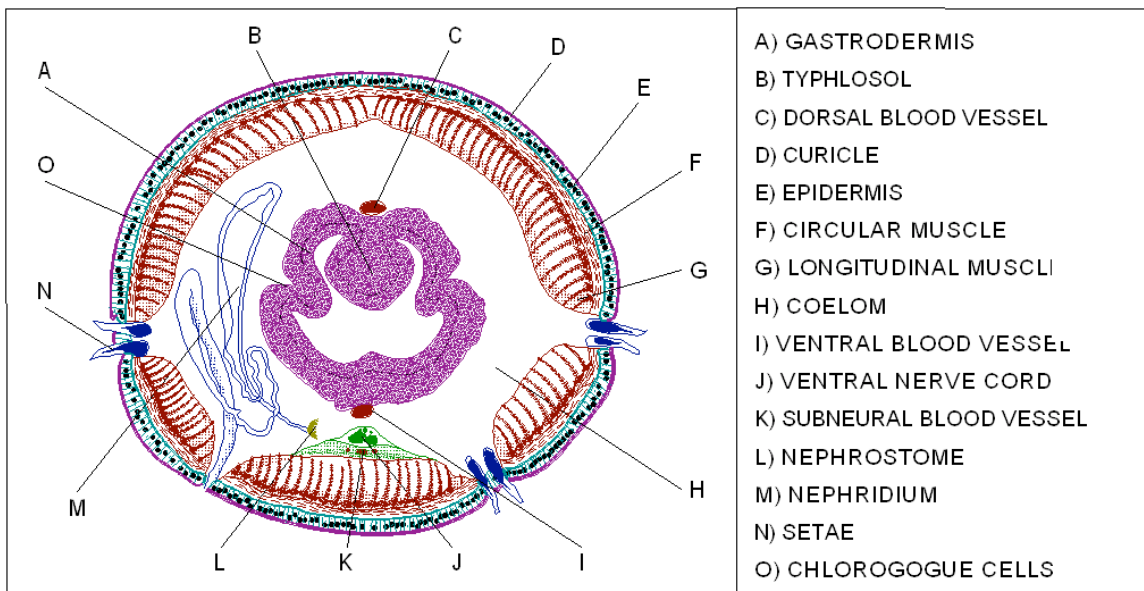


---



---

4. Look at the picture of a cross section of an earthworm.





**B) Segmented Worm Structure:**

Procedure:

1. What causes the earthworm to be classified as a segmented worm?

---

---

2. How does the anterior end differ from the posterior end?

---

---

3. Does the earthworm have any visible sensory organs?

---

---

**C) Segmented Worm Response:**

4. What is the earthworms response to:

- Being placed on soil:

---

---

- Being touched with vinegar:

---

---

- Being touched with \_\_\_\_\_:

---

---